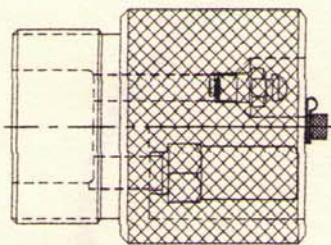


COUPLING ASSEMBLY

15TV Couplings were specifically designed for use in transfer of 134A refrigerant from transport to storage vessels.

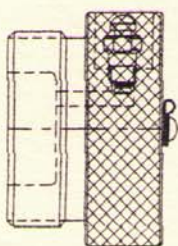
A key safety feature of this hand assembled coupling is that during Coupler and Nipple disconnect, the shut off valves close before the assembly seal vents. Virtually no fluid spill occurs. Should a valve not seal the two halves can be re-connected.

The Caps and Plugs including retention chains and rings are designed to limit Coupler and Nipple contamination and they provide safety features. Also the Coupling halves can be arranged on fluid lines to prevent liquid and vapor line cross-over errors at transfer hook up.



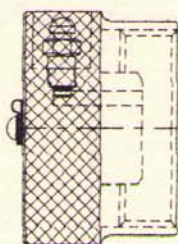
COUPLER PRESSURE RELIEF PLUG

When fully inserted, the Coupler Pressure Relief Plug is designed to open the Coupler valve and communicate refrigerant trapped in the transfer hose bore. Thermal induced pressure build-up is then controlled by the plug's 400 psi relief valve. The plug also guards against contaminants and a button exhaust valve allows trapped gas release before plug removal.



COUPLER SAFETY PLUG

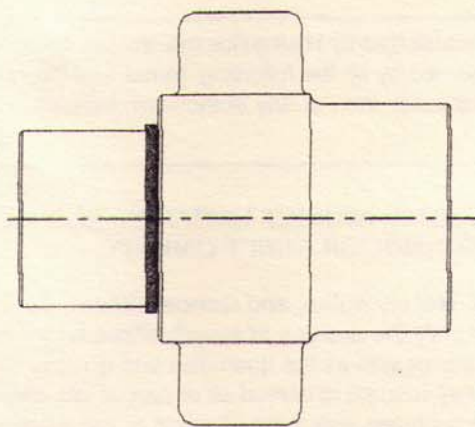
The Coupler Safety Plug is optional to the Relief Plug. It guards against contaminants and is designed to prevent product loss should the coupler valve fail. The safety plug button exhaust valve allows release of trapped gas before plug removal.



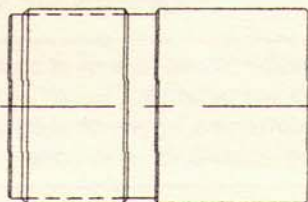
NIPPLE SAFETY CAP

The Nipple Safety Cap is a contaminant safeguard and is designed to prevent product loss should the nipple valve fail. The cap's button exhaust valve allows release of trapped gas before removing the cap.

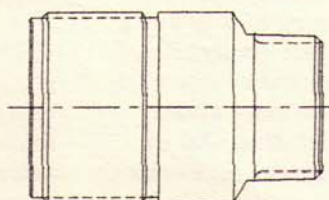




**COUPLER**



**NIPPLE**



**NIPPLE (CN-20-24 only)**

**Pressure Limitations**

Coupled & Uncoupled-1500 psi max.

Safety Caps & Plug-500 psi max.

**Operating Temp.**

-40° F to + 150° F

**Seals (other available)**

Neoprene o-rings

Teflon back-up rings

**Fluid Loss @ Disconnect**

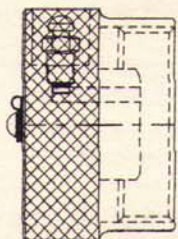
E15TV-CN-20 - 0.68ML

E15TV-CN-32 - 1.74 ML

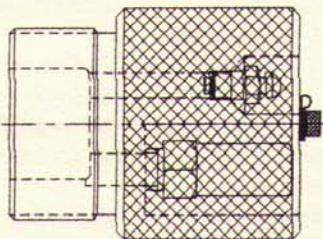
**Material-Coupling - Caps & Plugs**

Bodies - Aluminum

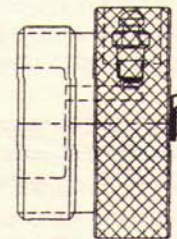
All other carbon steel.



**NIPPLE SAFETY CAP  
CHAIN & RING**



**COUPLER PRESSURE RELIEF PLUG  
CHAIN & RING**



**COUPLER SAFETY PLUG  
CHAIN & RING**

BODY SIZE	COUPLING PART No.	COUPLER PART No.	NIPPLE PART No.	SAFETY CAP PART No.	SAFETY PLUG PART No.	PRESSURE RELIEF PLUG PART No.
1-1/4"	E15TV-CN-20-24	E15TV-C-20	E15TV-N-20-24	E15TV-SC-20	E15TV-SP-20	E15TV-PRP-20
1-1/4"	E15TV-CN-20	E15TV-C-20	E15TV-N-20	E15TV-SC-20	E15TV-SP-20	E15TV-PRP-20
2.0"	E15TV-CN-32	E15TV-C-32	E15TV-N-32	E15TVS-C-32	E15TV-SP-32	E15TV-PRP-32

BODY SIZE	COUPLING PART No.	DIMENSIONS - INCHES				FEMALE PIPE THD SIZE	MALE PIPE THD SIZE	WEIGHT POUNDS
		COUPLING LENGTH	COUPLER LENGTH	NIPPLE LENGTH	ACROSS WING NUT			
1-14"	E15TV-CN-20-24	7.64	5.27	3.86	5.00	1-1/4:11-1/2	1-1/2:11-1/2	5
1-1/4"	E15TV-CN-20	7.64	5.27	3.86	5.00	1-1/4:11-1/2		5
2.0"	E15TV-CN-32	11.53	8.17	5.75	6.16	2:11-1/2		14